

Doctor Discussion Guide

Fill out the form below and take it with you to your child's next doctor appointment. It may help you start a discussion with the doctor about your child's symptoms and your concerns, and develop the right treatment plan for your child.

Your Child's ADHD Symptoms

How often do you notice these symptoms in your child? Check boxes next to each symptom for "Very often," "Often," "Sometimes," "Rarely," and "Never"

lack of attention to details/careless mistakes on schoolwork/activities	<input type="checkbox"/> Very often	<input type="checkbox"/> Often	<input type="checkbox"/> Sometimes	<input type="checkbox"/> Rarely	<input type="checkbox"/> Never
lack of sustained attention in tasks	<input type="checkbox"/> Very often	<input type="checkbox"/> Often	<input type="checkbox"/> Sometimes	<input type="checkbox"/> Rarely	<input type="checkbox"/> Never
does not seem to listen when spoken to	<input type="checkbox"/> Very often	<input type="checkbox"/> Often	<input type="checkbox"/> Sometimes	<input type="checkbox"/> Rarely	<input type="checkbox"/> Never
failure to follow through on tasks	<input type="checkbox"/> Very often	<input type="checkbox"/> Often	<input type="checkbox"/> Sometimes	<input type="checkbox"/> Rarely	<input type="checkbox"/> Never
difficulty organizing activities	<input type="checkbox"/> Very often	<input type="checkbox"/> Often	<input type="checkbox"/> Sometimes	<input type="checkbox"/> Rarely	<input type="checkbox"/> Never
avoids tasks requiring sustained mental effort	<input type="checkbox"/> Very often	<input type="checkbox"/> Often	<input type="checkbox"/> Sometimes	<input type="checkbox"/> Rarely	<input type="checkbox"/> Never
loses things	<input type="checkbox"/> Very often	<input type="checkbox"/> Often	<input type="checkbox"/> Sometimes	<input type="checkbox"/> Rarely	<input type="checkbox"/> Never
easily distracted by noises/objects	<input type="checkbox"/> Very often	<input type="checkbox"/> Often	<input type="checkbox"/> Sometimes	<input type="checkbox"/> Rarely	<input type="checkbox"/> Never
forgetful	<input type="checkbox"/> Very often	<input type="checkbox"/> Often	<input type="checkbox"/> Sometimes	<input type="checkbox"/> Rarely	<input type="checkbox"/> Never
fidgeting/squirming	<input type="checkbox"/> Very often	<input type="checkbox"/> Often	<input type="checkbox"/> Sometimes	<input type="checkbox"/> Rarely	<input type="checkbox"/> Never
leaving seat in classroom	<input type="checkbox"/> Very often	<input type="checkbox"/> Often	<input type="checkbox"/> Sometimes	<input type="checkbox"/> Rarely	<input type="checkbox"/> Never
running/climbing in inappropriate situations	<input type="checkbox"/> Very often	<input type="checkbox"/> Often	<input type="checkbox"/> Sometimes	<input type="checkbox"/> Rarely	<input type="checkbox"/> Never
difficulty playing quietly	<input type="checkbox"/> Very often	<input type="checkbox"/> Often	<input type="checkbox"/> Sometimes	<input type="checkbox"/> Rarely	<input type="checkbox"/> Never
being "on the go"	<input type="checkbox"/> Very often	<input type="checkbox"/> Often	<input type="checkbox"/> Sometimes	<input type="checkbox"/> Rarely	<input type="checkbox"/> Never
excessive talking	<input type="checkbox"/> Very often	<input type="checkbox"/> Often	<input type="checkbox"/> Sometimes	<input type="checkbox"/> Rarely	<input type="checkbox"/> Never

INTUNIV (guanfacine) Extended-Release Tablets is a prescription medicine used to treat Attention Deficit Hyperactivity Disorder (ADHD) in patients 6 to 17, either alone or in combination with ADHD stimulant medications. INTUNIV was shown to work in clinical studies lasting up to 9 weeks. INTUNIV should be used as part of a total treatment program that may include counseling or other therapies.

Safety Information

Patients should not take INTUNIV if they are allergic to guanfacine or other ingredients in INTUNIV, or are taking other medicines containing guanfacine (eg, TENEX®). Tell the doctor about all medicines, vitamins, and herbal supplements your child is taking.

Your Child's ADHD Symptoms

How often do you notice these symptoms in your child? Check boxes next to each symptom for "Very often," "Often," "Sometimes," "Rarely," and "Never"

blurts out answers Very often Often Sometimes Rarely Never

difficulty awaiting turn Very often Often Sometimes Rarely Never

interrupts others Very often Often Sometimes Rarely Never

Other symptoms and frequency: _____

Impact of Symptoms

In which settings do you think your child's symptoms are most noticeable.

At home At school In social settings

In other situations: _____

Treatment Options You Have Already Tried

What treatment options have other doctors or this doctor already prescribed or suggested?

Medication

If so, which medications have been prescribed for your child? _____

Behavioral therapy* Counseling*

Alternative therapies

If so, which alternative therapies have you tried? _____

*If you and your child have not tried behavioral therapy or counseling (individual and/or family), you may want to ask your child's doctor about other options. For some children, the combination of medication and behavioral therapy may be particularly helpful.

Safety Information

INTUNIV may cause serious side effects including low blood pressure, low heart rate, fainting, and sleepiness. Before starting INTUNIV, tell the doctor if your child has low blood pressure, low heart rate, heart problems, has fainted, has liver or kidney problems, is pregnant, breast-feeding or plans to become pregnant or breast-feed, or has any other medical condition. Patients should avoid becoming dehydrated or overheated while taking INTUNIV.

Concerns for Your Child

ADHD affects children in different ways, so parents often have varying concerns about their child's symptoms at school, at home, and in social settings. What are your top 3 concerns for your child that you would like to discuss with your child's doctor?

#1 _____

#2 _____

#3 _____

About ADHD

ADHD (Attention Deficit Hyperactivity Disorder) is a condition that affects children and adolescents, and is one of the most common childhood psychiatric conditions in the United States. Inattention, hyperactivity, and impulsivity are symptoms of ADHD. ADHD may affect children in a variety of settings.

Important Safety Information

Patients should not take INTUNIV if they are allergic to guanfacine or other ingredients in INTUNIV, or are taking other medicines containing guanfacine (eg, TENEX®). Tell the doctor about all medicines, vitamins, and herbal supplements your child is taking.

INTUNIV may cause serious side effects including low blood pressure, low heart rate, fainting, and sleepiness. Before starting INTUNIV, tell the doctor if your child has low blood pressure, low heart rate, heart problems, has fainted, has liver or kidney problems, is pregnant, breast-feeding or plans to become pregnant or breast-feed, or has any other medical condition. Patients should avoid becoming dehydrated or overheated while taking INTUNIV.

Patients should not drive or operate heavy equipment until understanding how INTUNIV affects them. INTUNIV can slow thinking and motor skills. While taking INTUNIV, patients should not drink alcohol or take other medicines that can cause sleepiness or dizziness as these symptoms may get worse.

The most common side effects of INTUNIV include sleepiness, tiredness, trouble sleeping, low blood pressure, nausea, stomach pain, and dizziness.

INTUNIV should be swallowed whole without crushing, chewing, or breaking the tablet. INTUNIV should not be taken with a high-fat meal. Do not change the dose or stop INTUNIV without talking with the doctor. The doctor will regularly check your child's blood pressure and heart rate.

Please see Patient Information.

You are encouraged to report negative side effects of prescription drugs to the FDA. Visit www.fda.gov/medwatch or call 1-800-FDA-1088.



© 2011 Shire US Inc., Wayne, PA 19087. All rights reserved.
INTUNIV® is a registered trademark of Shire LLC.



INTUNIV® (guanfacine)

Extended-Release Tablets

HIGHLIGHTS OF PRESCRIBING INFORMATION

These highlights do not include all the information needed to use INTUNIV® safely and effectively. See full prescribing information for INTUNIV®

INTUNIV® (guanfacine) extended-release tablets

Initial U.S. Approval: 1986

RECENT MAJOR CHANGES

Indications and Usage (1), 2/2011

Dosage and Administration, Dose Selection (2.2), 2/2011

Warnings and Precautions, Hypotension, Bradycardia, and Syncope (5.1), 2/2011

Warnings and Precautions, Sedation and Somnolence (5.2), 2/2011

INDICATIONS AND USAGE

INTUNIV® is a selective α_{2A} -adrenergic receptor agonist indicated for the treatment of Attention Deficit Hyperactivity Disorder (ADHD) as monotherapy and as adjunctive therapy to stimulant medications. The efficacy of INTUNIV® is based on results of two 8 to 9 week monotherapy studies and one 9 week adjunctive study in combination with psychostimulants in children and adolescents (14.1). Maintenance treatment has not been systematically evaluated, and patients who are continued on longer-term treatment require periodic reassessment (1).

DOSAGE AND ADMINISTRATION

For all patients (2.1):

- Dose once daily.
- Tablets should not be crushed, chewed or broken before swallowing.
- Do not administer with high-fat meals, because of increased exposure.
- Do not substitute for immediate-release guanfacine tablets on a mg-per-mg basis, because of differing pharmacokinetic profiles.

Dose Selection (2.2):

- If switching from immediate-release guanfacine, discontinue that treatment and titrate with INTUNIV® as directed.
- Begin at a dose of 1 mg once daily and adjust in increments of no more than 1 mg/week.
- Maintain the dose within the range of 1 mg to 4 mg per day depending on clinical response and tolerability.
- Consider dosing on a mg/kg basis. Improvements observed starting at doses of 0.05-0.08 mg/kg once daily. Doses up to 0.12 mg/kg once daily may provide additional benefit.
- Doses above 4 mg/day have not been studied.

Discontinuation (2.4):

- When discontinuing, taper the dose in decrements of no more than 1 mg every 3 to 7 days.

DOSAGE FORMS AND STRENGTHS

Extended-release tablets: 1 mg, 2 mg, 3 mg and 4 mg (3)

CONTRAINDICATIONS

History of hypersensitivity to INTUNIV®, its inactive ingredients, or other products containing guanfacine (e.g. TENEX®)(4).

WARNINGS AND PRECAUTIONS

- Hypotension, bradycardia, and syncope: Use INTUNIV® with caution in patients at risk for hypotension, bradycardia, heart block, or syncope (e.g., those taking antihypertensives). Measure heart rate and blood pressure prior to initiation of therapy, following dose increases, and periodically while on therapy. Advise patients to avoid becoming dehydrated or overheated (5.1).
- Sedation and somnolence: Occur commonly with INTUNIV®. Consider the potential for additive sedative effects with CNS depressant drugs. Caution patients against operating heavy equipment or driving until they know how they respond to INTUNIV® (5.2).
- Other guanfacine-containing products: Do not use INTUNIV® concomitantly with other products containing guanfacine (e.g., Tenex) (5.3).

ADVERSE REACTIONS

Most common adverse reactions ($\geq 5\%$ and at least twice placebo rate) in the monotherapy trials: somnolence, fatigue, nausea, lethargy, and hypotension (6). Most common adverse reactions ($\geq 5\%$ and at least twice placebo rate) in the adjunctive trial: somnolence, fatigue, insomnia, dizziness, and abdominal pain (6).

To report SUSPECTED ADVERSE REACTIONS, contact Shire US Inc. at 1-800-828-2088 or FDA at 1-800-FDA-1088 or www.fda.gov/medwatch.

DRUG INTERACTIONS

- CYP3A4/5 inhibitors (e.g., ketoconazole): Coadministration may increase rate and extent of guanfacine exposure. Use concomitantly with caution (7.1).
- CYP3A4 inducers (e.g., rifampin): Coadministration may decrease rate and extent of guanfacine exposure. Consider dose increase of INTUNIV® (7.2).
- Valproic acid: Coadministration may increase serum valproic acid concentrations (7.3).
- Antihypertensive drugs: Use caution when coadministered with INTUNIV® (5.1, 7.4).
- CNS depressants: Use caution when coadministered with INTUNIV® (5.2, 7.5).

USE IN SPECIFIC POPULATIONS

Hepatic or Renal Impairment: dose reduction may be required in patients with clinically significant impairment of hepatic or renal function (8.6).

See 17 for PATIENT COUNSELING INFORMATION and FDA-approved Patient Labeling.

Revised: 6/2011

FULL PRESCRIBING INFORMATION: CONTENTS *

1	INDICATIONS AND USAGE	7	DRUG INTERACTIONS	11	DESCRIPTION
2	DOSAGE AND ADMINISTRATION	7.1	CYP3A4/5 Inhibitors	12	CLINICAL PHARMACOLOGY
2.1	General Dosing Information	7.2	CYP3A4 Inducers	12.1	Mechanism of Action
2.2	Dose Selection	7.3	Valproic Acid	12.2	Pharmacodynamics
2.3	Maintenance Treatment	7.4	Antihypertensive Drugs	12.3	Pharmacokinetics
2.4	Discontinuation	7.5	CNS Depressant Drugs	13	NONCLINICAL TOXICOLOGY
2.5	Missed Doses	7.6	Oral Methylphenidate	13.1	Carcinogenesis, Mutagenesis, Impairment of Fertility
3	DOSAGE FORMS AND STRENGTHS	7.7	Lisdexamfetamine Dimesylate	14	CLINICAL STUDIES
4	CONTRAINDICATIONS	8	USE IN SPECIFIC POPULATIONS	14.1	Safety and Efficacy Studies
5	WARNINGS AND PRECAUTIONS	8.1	Pregnancy	16	HOW SUPPLIED/STORAGE AND HANDLING
5.1	Hypotension, Bradycardia, and Syncope	8.3	Nursing Mothers	17	PATIENT COUNSELING INFORMATION
5.2	Sedation and Somnolence	8.4	Pediatric Use	17.1	Dosing and Administration
5.3	Other Guanfacine-Containing Products	8.5	Geriatric Use	17.2	Adverse Reactions
6	ADVERSE REACTIONS	8.6	Use in Patients with Renal or Hepatic Impairment		
6.1	Clinical Trial Experience	9	DRUG ABUSE AND DEPENDENCE		
		9.1	Controlled Substance		
		10	OVERDOSAGE		

* Sections or subsections omitted from full prescribing information are not listed.

FULL PRESCRIBING INFORMATION

1 INDICATIONS AND USAGE

INTUNIV® is indicated for the treatment of Attention Deficit Hyperactivity Disorder (ADHD) as monotherapy and as adjunctive therapy to stimulant medications. The efficacy of INTUNIV® was studied for the treatment of ADHD in two controlled monotherapy clinical trials (8 and 9 weeks in duration) and one controlled adjunctive trial with psychostimulants (9 weeks in duration) in children and adolescents ages 6-17 who met DSM-IV® criteria for ADHD [see *Clinical Studies (14)*]. The effectiveness of INTUNIV® for longer-term use (more than 9 weeks) has not been systematically evaluated in controlled trials.

A diagnosis of ADHD implies the presence of hyperactive-impulsive and/or inattentive symptoms that cause impairment and were present before the age of 7 years. The symptoms must cause clinically significant impairment, e.g., in social, academic, or occupational functioning, and be present in two or more settings, e.g., school (or work) and at home. The symptoms must not be better accounted for by another mental disorder. For the Inattentive Type, at least six of the following symptoms must have persisted for at least 6 months: lack of attention to details/careless mistakes; lack of sustained attention; poor listener; failure to follow through on tasks; poor organization; avoids tasks requiring sustained mental effort; loses things; easily distracted; forgetful. For the Hyperactive-Impulsive Type, at least six of the following symptoms must have persisted for at least 6 months: fidgeting/squirming; leaving seat; inappropriate running/climbing; difficulty with quiet activities; "on the go"; excessive talking; blurting answers; can't wait turn; intrusive. The Combined Type requires both inattentive and hyperactive-impulsive criteria to be met.

Special Diagnostic Considerations

Specific etiology of this syndrome is unknown, and there is no single diagnostic test. Adequate diagnosis requires the use not only of medical but also of special psychological, educational, and social resources. Learning may or may not be impaired. The diagnosis must be based upon a complete history and evaluation of the patient and not solely on the presence of the required number of DSM-IV® characteristics.

Need for Comprehensive Treatment Program

INTUNIV® is indicated as an integral part of a total treatment program for ADHD that may include other measures (psychological, educational, and social) for patients with this syndrome. Drug treatment may not be indicated for all patients with this syndrome. INTUNIV® is not intended for use in patients who exhibit symptoms secondary to environmental factors and/or other primary psychiatric disorders, including psychosis. Appropriate educational/vocational placement is essential and psychosocial intervention is often helpful. When remedial measures alone are insufficient, the decision to prescribe INTUNIV® will depend upon the physician's assessment of the chronicity and severity of the patient's symptoms and on the level of functional impairment.

2 DOSAGE AND ADMINISTRATION

2.1 General Dosing Information

INTUNIV® is an extended-release tablet and should be dosed once daily. **Tablets should not be crushed, chewed or broken before swallowing because this will increase the rate of guanfacine release.** Do not administer with high fat meals, due to increased exposure. Do not substitute for immediate-release guanfacine tablets on a mg-per-mg basis, because of differing pharmacokinetic profiles. INTUNIV® has a delayed T_{max} , reduced C_{max} and lower bioavailability compared to those of the same dose of immediate-release guanfacine [see *Clinical Pharmacology (12.3)*].

2.2 Dose Selection

If switching from immediate-release guanfacine, discontinue that treatment, and titrate with INTUNIV® according to the following recommended schedule.

Begin at a dose of 1 mg/day, and adjust in increments of no more than 1 mg/week, for both monotherapy and adjunctive therapy to a psychostimulant.

Maintain the dose within the range of 1 mg to 4 mg once daily, depending on clinical response and tolerability, for both monotherapy and adjunctive therapy to a psychostimulant. In clinical trials, patients were randomized or dose optimized to doses of 1 mg, 2 mg, 3 mg or 4 mg and received INTUNIV® once daily in the morning in monotherapy trials and once daily in the morning or the evening in the adjunctive therapy trial [see *Clinical Studies (14.1)*].

In monotherapy trials, clinically relevant improvements were observed beginning at doses in the range 0.05-0.08 mg/kg once daily. Efficacy increased with increasing weight-adjusted dose (mg/kg). If well tolerated, doses up to 0.12 mg/kg once daily may provide additional benefit. Doses above 4 mg/day have not been systematically studied in controlled clinical trials.

In the adjunctive trial, the majority of subjects reached optimal doses in the 0.05-0.12 mg/kg/day range.

In clinical trials, there were dose-related and exposure-related risks for several clinically significant adverse reactions (hypotension, bradycardia, sedative events). Thus, consideration should be given to dosing INTUNIV® on a mg/kg basis, in order to balance the exposure-related potential benefits and risks of treatment.

2.3 Maintenance Treatment

The effectiveness of INTUNIV® for longer-term use (more than 9 weeks) has not been systematically evaluated in controlled trials. Therefore the physician electing to use INTUNIV® for extended periods should periodically re-evaluate the long-term usefulness of the drug for the individual patient.

2.4 Discontinuation

In a pharmacodynamic study in healthy young adult volunteers receiving INTUNIV® (4 mg once daily) or placebo, the effects of abrupt discontinuation were compared to tapering. There were greater mean increases in systolic and diastolic blood pressure and heart rate after abrupt discontinuation of INTUNIV®, but these changes generally reflected a return to original baseline and were not meaningfully different for the two discontinuation strategies. However, infrequent, transient elevations in blood pressure above original baseline (i.e., rebound) have been reported to occur upon abrupt discontinuation of guanfacine. To minimize these effects, the dose should generally be tapered in decrements of no more than 1 mg every 3 to 7 days.

2.5 Missed Doses

When reinitiating patients to the previous maintenance dose after two or more missed consecutive doses, physicians should consider titration based on patient tolerability.

3 DOSAGE FORMS AND STRENGTHS

1 mg, 2 mg, 3 mg and 4 mg extended-release tablets

	1 mg	2 mg	3 mg	4 mg
Color	White/off-white	White/off-white	Green	Green
Shape	Round	Caplet	Round	Caplet
Debossment (top/bottom)	503 / 1mg	503 / 2mg	503 / 3mg	503 / 4mg

4 CONTRAINDICATIONS

Patients with a history of hypersensitivity to INTUNIV®, its inactive ingredients [see *Description (11)*], or other products containing guanfacine (e.g. TENEX®) should not take INTUNIV®.

5 WARNINGS AND PRECAUTIONS

5.1 Hypotension, Bradycardia, and Syncope

Treatment with INTUNIV® can cause decreases in blood pressure and heart rate. In the monotherapy, pediatric, short-term (8-9 weeks), controlled trials, the maximum mean changes from baseline in systolic blood pressure, diastolic blood pressure, and pulse were -5 mm Hg, -3 mm Hg, and -6 bpm, respectively, for all dose groups combined (generally one week after reaching target doses of 1 mg/day, 2 mg/day, 3 mg/day or 4 mg/day). These changes were dose dependent. Decreases in blood pressure and heart rate were usually modest and asymptomatic; however, hypotension and bradycardia can occur. Hypotension was reported as an adverse event for 7% of the INTUNIV® group and 3% of the placebo group. This includes orthostatic hypotension, which was reported for 1% of the INTUNIV® group and none in the placebo group. In the adjunctive trial, hypotension (3%) and bradycardia (2%) were observed in patients treated with INTUNIV® as compared to none in the placebo group. In long-term, open label studies, (mean exposure of approximately 10 months), maximum decreases in systolic and diastolic blood pressure occurred in the first month of therapy. Decreases were less pronounced over time. Syncope occurred in 1% of pediatric subjects in the clinical program. The majority of these cases occurred in the long-term, open-label studies.

Measure heart rate and blood pressure prior to initiation of therapy, following dose increases, and periodically while on therapy. Use INTUNIV® with caution in patients with a history of hypotension, heart block, bradycardia, or cardiovascular disease, because it can decrease blood pressure and heart rate. Use caution in treating patients who have a history of syncope or may have a condition that predisposes them to syncope, such as hypotension, orthostatic hypotension, bradycardia, or dehydration. Use INTUNIV® with caution in patients treated concomitantly with antihypertensives or other drugs that can reduce blood pressure or heart rate or increase the risk of syncope. Advise patients to avoid becoming dehydrated or overheated.

5.2 Sedation and Somnolence

Somnolence and sedation were commonly reported adverse reactions in clinical studies (38% for INTUNIV® vs. 12% for placebo in monotherapy studies and 18% for INTUNIV® vs. 7% for placebo in the adjunctive study) in children and adolescents with ADHD, especially during initial use [see *Adverse Reactions (6.1)*]. Before using INTUNIV® with other centrally active depressants (such as phenothiazines, barbiturates, or benzodiazepines), consider the potential for additive sedative effects. Caution patients against operating heavy equipment or driving until they know how they respond to treatment with INTUNIV®. Advise patients to avoid use with alcohol.

5.3 Other Guanfacine-Containing Products

Guanfacine, the active ingredient in INTUNIV®, is also approved as an antihypertensive. Do not use INTUNIV® in patients concomitantly taking other guanfacine-containing products (e.g., Tenex).

6 ADVERSE REACTIONS

The following serious adverse reactions are described elsewhere in the labelling:

- Hypotension, bradycardia, and syncope [see *Warnings and Precautions (5.1)*]
- Sedation and somnolence [see *Warnings and Precautions (5.2)*]

Monotherapy Trials

The most commonly observed adverse reactions (incidence \geq 5% and at least twice the rate for placebo) in the monotherapy trials with INTUNIV® were: somnolence, fatigue, nausea, lethargy, and hypotension.

Twelve percent (12%) of patients receiving INTUNIV® discontinued from the monotherapy clinical studies due to adverse events, compared to 4% in the placebo group. The most common adverse reactions leading to discontinuation of INTUNIV®-treated patients from the studies were somnolence/sedation (6%) and fatigue (2%). Less common adverse reactions leading to discontinuation (occurring in approximately 1% of patients) included: hypotension, headache, and dizziness.

Adjunctive Trial

The most commonly observed adverse reactions (incidence \geq 5% and at least twice the rate for placebo) in the adjunctive trial with INTUNIV® were: somnolence, fatigue, insomnia, dizziness, and abdominal pain.

Three percent of patients receiving INTUNIV® discontinued from the adjunctive clinical study due to adverse events, compared to 1% in the placebo group.

6.1 Clinical Trial Experience

Short Term Monotherapy Clinical Studies

Common Adverse Reactions - Two short-term, placebo-controlled, double-blind pivotal studies (Studies 1 and 2) were conducted in children and adolescents with ADHD, using fixed doses of INTUNIV® (1 mg, 2 mg, 3 mg, and 4 mg/day). The most commonly reported adverse reactions (occurring in \geq 2% of patients) that were considered drug-related and reported in a greater percentage of patients taking INTUNIV® compared to patients taking placebo are shown in Table 1. Adverse reactions that were dose-related include: somnolence/sedation, abdominal pain, dizziness, hypotension, dry mouth and constipation.

Adverse Reaction Term	All Doses of INTUNIV® (N=513)	Placebo (N=149)
Somnolence ^a	38%	12%
Headache	24%	19%
Fatigue	14%	3%
Abdominal pain ^b	11%	9%
Hypotension ^c	7%	3%
Nausea	6%	2%
Lethargy	6%	3%
Dizziness	6%	4%
Irritability	6%	4%
Decreased appetite	5%	3%
Dry mouth	4%	1%
Constipation	3%	1%

a: The somnolence term includes somnolence, sedation, and hypersomnia.
b: The abdominal pain term includes abdominal pain, abdominal pain upper, and abdominal pain lower
c: The hypotension term includes hypotension, orthostatic hypotension, and decreased blood pressure.

Short Term Adjunctive Clinical Study

A 9-week, placebo-controlled, double-blind, dose-optimized pivotal study (Study 3) was conducted in children and adolescents aged 6-17 years with a diagnosis of ADHD who were identified as having a sub-optimal response to psychostimulants. Patients received INTUNIV® (1 mg, 2 mg, 3 mg, and 4 mg/day) or placebo, dosed in the morning or in the evening, in combination with their morning dose of psychostimulant. The most commonly reported adverse reactions (occurring in \geq 2% of patients in the overall INTUNIV® group) that were reported in a greater percentage of patients taking INTUNIV® compared to patients taking placebo are shown in Table 2.

Adverse Reaction Term	All Doses of INTUNIV® (N=302) ^a	Placebo (N=153)
Headache	21%	13%
Somnolence ^b	18%	7%
Insomnia ^c	12%	6%
Fatigue	10%	3%
Abdominal pain ^d	10%	3%
Dizziness	8%	4%
Decreased appetite	7%	4%
Nausea	5%	3%
Diarrhea	4%	1%
Hypotension ^e	3%	0%
Affect lability	2%	1%
Bradycardia	2%	0%
Constipation	2%	0%
Dry mouth	2%	0%

a: The morning and evening dose groups of INTUNIV® are combined.
b: The somnolence term includes somnolence, sedation, and hypersomnia.
c: The insomnia term includes insomnia, initial insomnia, and middle insomnia.
d: The abdominal pain term includes abdominal pain, abdominal pain upper, and abdominal pain lower
e: The hypotension term includes hypotension, orthostatic hypotension, and decreased blood pressure.

Effects on Height, Weight, and Body Mass Index (BMI)

Patients taking INTUNIV® demonstrated similar growth compared to normative data. Patients taking INTUNIV® had a mean increase in weight of 0.5 kg (1 lb) compared to those receiving placebo over a comparative treatment period. Patients receiving INTUNIV® for at least 12 months in open-label studies gained an average of 8 kg (17 lbs) in weight and 8 cm (3 in) in height. The height, weight, and BMI percentile remained stable in patients at 12 months in the long-term studies compared to when they began receiving INTUNIV®.

Laboratory Tests

In short and long-term studies, no clinically important effects were identified on any laboratory parameters.

Effects on Heart Rate and QT Interval

The effect of two dose levels of immediate-release guanfacine (4 mg and 8 mg) on the QT interval was evaluated in a double-blind, randomized, placebo- and active-controlled, cross-over study in healthy adults.

A dose-dependent decrease in heart rate was observed during the first 12 hours, at time of maximal concentrations. The mean change in heart rate was -13 bpm at 4 mg and -22 bpm at 8 mg.

An apparent increase in mean QTc was observed for both doses. However, guanfacine does not appear to interfere with cardiac repolarization of the form associated with proarrhythmic drugs. This finding has no known clinical relevance.

Other Adverse Reactions Observed in Clinical Studies

Table 3 includes additional adverse reactions observed in short-term, placebo-controlled and long-term, open-label clinical studies not included elsewhere in section 6.1, listed by organ system.

The mean duration of exposure of the 446 patients in two 2-year, open-label long-term studies was approximately 10 months. The percentage of patients at each dose upon completion or early withdrawal from the studies was 37% (n=164) for 4 mg, 33% (n=149) for 3 mg, 27% (n=119) for 2 mg, and 3% (n=14) for 1 mg, respectively. The number of patients at each dose (prior to tapering) that completed the 2-year studies was n=27 for 4 mg, n=24 for 3 mg, n=14 for 2 mg, and n=2 for 1 mg, respectively.

Table 3: Other adverse reactions observed in clinical studies

Body System	Adverse Reaction
Cardiac	Atrioventricular block, sinus arrhythmia
Gastrointestinal	Dyspepsia, stomach discomfort, vomiting
General	Asthenia, chest pain
Immune System	Hypersensitivity
Disorders	
Investigations	Increased alanine amino transferase, increased blood pressure, increased weight
Nervous system	Convulsion, postural dizziness, syncope
Psychiatric	Agitation, anxiety, depression, nightmare
Renal	Increased urinary frequency, enuresis
Respiratory	Asthma
Vascular	Hypertension, pallor

7 DRUG INTERACTIONS

7.1 CYP3A4/5 Inhibitors

Use caution when INTUNIV® is administered to patients taking ketoconazole and other strong CYP3A4/5 inhibitors, since elevation of plasma guanfacine concentration increases the risk of adverse events such as hypotension, bradycardia, and sedation. There was a substantial increase in the rate and extent of guanfacine exposure when administered with ketoconazole; the guanfacine exposure increased 3-fold (AUC).

7.2 CYP3A4 Inducers

When patients are taking INTUNIV® concomitantly with a CYP3A4 inducer, an increase in the dose of INTUNIV® within the recommended dose range may be considered. There was a significant decrease in the rate and extent of guanfacine exposure when co-administered with rifampin, a CYP3A4 inducer. The exposure to guanfacine decreased by 70% (AUC).

7.3 Valproic Acid

Co-administration of guanfacine and valproic acid can result in increased concentrations of valproic acid. The mechanism of this interaction is unknown, although both guanfacine (via a Phase I metabolite, 3-hydroxy guanfacine) and valproic acid are metabolized by glucuronidation, possibly resulting in competitive inhibition. When INTUNIV® is co-administered with valproic acid, monitor patients for potential additive CNS effects, and consider monitoring serum valproic acid concentrations. Adjustments in the dose of valproic acid may be indicated when co-administered with INTUNIV®.

7.4 Antihypertensive Drugs

Use caution when INTUNIV® is administered concomitantly with antihypertensive drugs, due to the potential for additive pharmacodynamic effects (e.g., hypotension, syncope) [see *Warnings and Precautions* (5.1)].

7.5 CNS Depressant Drugs

Caution should be exercised when INTUNIV® is administered concomitantly with CNS depressant drugs (e.g. alcohol, sedative/hypnotics, benzodiazepines, barbiturates, and antipsychotics) due to the potential for additive pharmacodynamic effects (e.g., sedation, somnolence) [see *Warnings and Precautions* (5.2)].

7.6 Oral Methylphenidate

In a drug interaction study (N=35), neither INTUNIV® (4mg) nor CONCERTA® (methylphenidate HCl) (36mg) were found to affect the pharmacokinetics of the other drug when co-administered.

7.7 Lisdexamfetamine Dimesylate

In a drug interaction study (N=40), administration of INTUNIV® in combination with VYVANSE® (lisdexamfetamine dimesylate) (50 mg) increased guanfacine maximum plasma concentration by 19%, whereas exposure (area under the curve; AUC) was increased by 7%. These small changes are not expected to be clinically meaningful. In this study, no effect on d-amphetamine exposure was observed following co-administration of INTUNIV® and VYVANSE®.

8 USE IN SPECIFIC POPULATIONS

8.1 Pregnancy

Pregnancy Category B

Rat experiments have shown that guanfacine crosses the placenta. However, administration of guanfacine to rats and rabbits at 6 and 4 times, respectively, the maximum recommended human dose of 4 mg/day on a mg/m² basis resulted in no evidence of harm to the fetus. Higher doses (20 times the maximum recommended human dose in both rabbits and rats) were associated with reduced fetal survival and maternal toxicity. There are no adequate and well-controlled studies of guanfacine in pregnant women. INTUNIV® should be used during pregnancy only if the potential benefit to the mother outweighs the potential risk to the fetus.

8.3 Nursing Mothers

It is not known whether guanfacine is excreted in human milk. Because many drugs are excreted in human milk, caution should be exercised when INTUNIV® is administered to a nursing woman. Experiments with rats have shown that guanfacine is excreted in the milk.

8.4 Pediatric Use

The safety and efficacy of INTUNIV® in pediatric patients less than 6 years of age have not been established. For children and adolescents 6 years and older, efficacy beyond 9 weeks and safety beyond 2 years of treatment have not been established [see *Adverse Reactions (6)* and *Clinical Studies (14)*].

8.5 Geriatric Use

The safety and efficacy of INTUNIV® in geriatric patients have not been established.

8.6 Use in Patients with Renal or Hepatic Impairment

Renal Impairment

The impact of renal impairment on the pharmacokinetics of guanfacine in children was not assessed. In adult patients with impaired renal function, the cumulative urinary excretion of guanfacine and the renal clearance diminished as renal function decreased. In patients on hemodialysis, the dialysis clearance was about 15% of the total clearance. The low dialysis clearance suggests that the hepatic elimination (metabolism) increases as renal function decreases. It may be necessary to adjust the dose in patients with significant impairment of renal function.

Hepatic Impairment

The impact of hepatic impairment on PK of guanfacine in children was not assessed. Guanfacine in adults is cleared both by the liver and the kidney, and approximately 50% of the clearance of guanfacine is hepatic. It may be necessary to adjust the dose in patients with significant impairment of hepatic function.

9 DRUG ABUSE AND DEPENDENCE

9.1 Controlled Substance

INTUNIV® is not a controlled substance and has no known potential for abuse or dependence.

10 OVERDOSAGE

Symptoms

Two cases of accidental overdose of INTUNIV® were reported in clinical trials in pediatric ADHD patients. These reports included adverse reactions of sedation and bradycardia in one patient and somnolence and dizziness in the other patient.

Post-marketing reports of guanfacine overdose indicate that hypotension, drowsiness, lethargy, and bradycardia have been observed following overdose. Initial hypertension may develop early and may be followed by hypotension. Similar symptoms have been described in voluntary reports to the American Association of Poison Control Center's National Poison Data System. Miosis of the pupils may be noted on examination. No fatal overdoses of guanfacine have been reported in published literature.

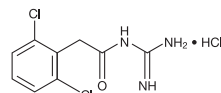
Treatment

Consult a Certified Poison Control Center by calling 1-800-222-1222 for up to date guidance and advice.

Management of INTUNIV® overdose should include monitoring for and the treatment of initial hypertension, if that occurs, as well as hypotension, bradycardia, lethargy and respiratory depression. Children and adolescents who develop lethargy should be observed for the development of more serious toxicity including coma, bradycardia and hypotension for up to 24 hours, due to the possibility of delayed onset hypotension.

11 DESCRIPTION

INTUNIV® is a once-daily, extended-release formulation of guanfacine hydrochloride (HCl) in a matrix tablet formulation for oral administration only. The chemical designation is N-amidino-2-(2,6-dichlorophenyl) acetamide monohydrochloride. The molecular formula is C₉H₉Cl₂ N₃O·HCl corresponding to a molecular weight of 282.55. The chemical structure is:



Guanfacine HCl is a white to off-white crystalline powder, sparingly soluble in water (approximately 1 mg/mL) and alcohol and slightly soluble in acetone. The only organic solvent in which it has relatively high solubility is methanol (>30 mg/mL). Each tablet contains guanfacine HCl equivalent to 1 mg, 2 mg, 3 mg, or 4 mg of guanfacine base. The tablets also contain hypromellose, methacrylic acid copolymer, lactose, povidone, crospovidone, microcrystalline cellulose, fumaric acid, and glyceryl behenate. In addition, the 3mg and 4mg tablets also contain green pigment blend PB-1763.

12 CLINICAL PHARMACOLOGY

12.1 Mechanism of Action

Guanfacine is a selective alpha_{2A}-adrenergic receptor agonist. Guanfacine is not a central nervous system (CNS) stimulant. The mechanism of action of guanfacine in ADHD is not known.

12.2 Pharmacodynamics

Guanfacine is a selective alpha_{2A}-adrenergic receptor agonist in that it has a 15-20 times higher affinity for this receptor subtype than for the alpha_{2B} or alpha_{2C} subtypes.

Guanfacine is a known antihypertensive agent. By stimulating alpha_{2A}-adrenergic receptors, guanfacine reduces sympathetic nerve impulses from the vasomotor center to the heart and blood vessels. This results in a decrease in peripheral vascular resistance and a reduction in heart rate.

12.3 Pharmacokinetics

Absorption and Distribution

Guanfacine is readily absorbed and approximately 70% bound to plasma proteins independent of drug concentration. After oral administration of INTUNIV® the time to peak plasma concentration is approximately 5 hours in children and adolescents with ADHD.

Immediate-release guanfacine and INTUNIV® have different pharmacokinetic characteristics; dose substitution on a milligram for milligram basis will result in differences in exposure.

A comparison across studies suggests that the C_{max} is 60% lower and AUC_{0-∞} 43% lower, respectively, for INTUNIV® compared to immediate-release guanfacine. Therefore, the relative bioavailability of INTUNIV® to immediate-release guanfacine is 58%. The mean pharmacokinetic parameters in adults following the administration of INTUNIV® 1 mg once daily and immediate-release guanfacine 1mg once daily are summarized in Table 4

Parameter	INTUNIV® 1 mg once daily (n=52)	Immediate-release guanfacine 1 mg once daily (n=12)
C _{max} (ng/mL)	1.0 ± 0.3	2.5 ± 0.6
AUC _{0-∞} (ng.h/mL)	32 ± 9	56 ± 15
t _{max} (h)	6.0 (4.0 – 8.0)	3.0 (1.5-4.0)
t _{1/2} (h)	18 ± 4	16 ± 3

Note: Values are mean +/- SD, except for t_{max} which is median (range)

Exposure to guanfacine was higher in children (ages 6-12) compared to adolescents (ages 13-17) and adults. After oral administration of multiple doses of INTUNIV® 4 mg, the C_{max} was 10 ng/mL compared to 7 ng/mL and the AUC was 162 ng h/mL compared to 116 ng h/mL in children (ages 6-12) and adolescents (ages 13-17), respectively. These differences are probably attributable to the lower body weight of children compared to adolescents and adults.

The pharmacokinetics were affected by intake of food when a single dose of INTUNIV® 4 mg was administered with a high-fat breakfast. The mean exposure increased (C_{max} ~75% and AUC ~40%) compared to dosing in a fasted state.

Dose Proportionality

Following administration of INTUNIV® in single doses of 1 mg, 2 mg, 3 mg, and 4 mg to adults, C_{max} and AUC_{0-∞} of guanfacine were proportional to dose.

Metabolism and Elimination

In vitro studies with human liver microsomes and recombinant CYPs demonstrated that guanfacine was primarily metabolized by CYP3A4. In pooled human hepatic microsomes, guanfacine did not inhibit the activities of the major cytochrome P450 isoenzymes (CYP1A2, CYP2C8, CYP2C9, CYP2C19, CYP2D6 or CYP3A4/5). Guanfacine is a substrate of CYP3A4/5 and exposure is affected by CYP3A4/5 inducers/ inhibitors.

Renal and Hepatic Impairment

The impact of renal impairment on PK of guanfacine in children was not assessed [see *Use in Specific Populations (8.6)*].

13 NONCLINICAL TOXICOLOGY**13.1 Carcinogenesis, Mutagenesis, Impairment of Fertility**

No carcinogenic effect of guanfacine was observed in studies of 78 weeks in mice or 102 weeks in rats at doses up to 6-7 times the maximum recommended human dose of 4 mg/day on a mg/m² basis.

Guanfacine was not genotoxic in a variety of test models, including the Ames test and an *in vitro* chromosomal aberration test; however, a marginal increase in numerical aberrations (polyploidy) was observed in the latter study.

No adverse effects were observed in fertility studies in male and female rats at doses up to 30 times the maximum recommended human dose on a mg/m² basis.

14 CLINICAL STUDIES**14.1 Safety and Efficacy Studies**

The efficacy of INTUNIV® in the treatment of ADHD was established in 2 placebo-controlled monotherapy trials (Studies 1 and 2) and in 1 placebo-controlled adjunctive trial with psychostimulants (Study 3) in children and adolescents ages 6-17.

Studies 1 and 2: Fixed-dose INTUNIV® Monotherapy

Study 1 evaluated 2 mg, 3 mg and 4 mg of INTUNIV® dosed once daily in an 8-week, double-blind, placebo-controlled, parallel-group, fixed dose design (n=345). Study 2 evaluated 1 mg, 2 mg, 3 mg and 4 mg of INTUNIV® dosed once daily in a 9-week, double-blind, placebo-controlled, parallel-group, fixed-dose design (n=324). In Studies 1 and 2, patients were randomized to a fixed dose of INTUNIV®. Doses were titrated in increments of up to 1 mg/week. The lowest dose of 1 mg used in Study 2 was assigned only to patients less than 50 kg (110 lbs). Patients who weighed less than 25 kg (55 lbs) were not included in either study.

Signs and symptoms of ADHD were evaluated on a once weekly basis using the clinician administered and scored ADHD Rating Scale (ADHD-RS-IV), which includes both hyperactive/impulsive and inattentive subscales. The primary efficacy outcome was the change from baseline to endpoint in ADHD-RS-IV total scores. Endpoint was defined as the last post-randomization treatment week for which a valid score was obtained prior to dose tapering (up to Week 5 in Study 1 and up to Week 6 in Study 2).

The mean reductions in ADHD-RS-IV total scores at endpoint were statistically significantly greater for INTUNIV® compared to placebo for Studies 1 and 2. Placebo-adjusted changes from baseline were statistically significant for each of the 2 mg, 3 mg, and 4 mg INTUNIV® randomized treatment groups in both studies, as well as the 1 mg INTUNIV® treatment group (for patients 55-110 lbs) that was included only in Study 2.

Dose-responsive efficacy was evident, particularly when data were examined on a weight-adjusted (mg/kg) basis. When evaluated over the dose range of 0.01-0.17 mg/kg/day, clinically relevant improvements were observed beginning at doses in the range 0.05-0.08 mg/kg/day. Doses up to 0.12 mg/kg/day were shown to provide additional benefit.

Controlled, monotherapy long-term efficacy studies (>9 weeks) have not been conducted.

In the monotherapy trials, subgroup analyses were performed to identify any differences in response based on gender or age (6-12 vs. 13-17). Analyses of the primary outcome did not suggest any differential responsiveness on the basis of gender. Analyses by age subgroup revealed a statistically significant treatment effect only in the 6-12 age subgroup. Due to the relatively small proportion of adolescent patients (ages 13-17) enrolled into these studies (approximately 25%), these data may not be sufficient to demonstrate efficacy in the adolescent subgroup. In these studies, patients were randomized to a fixed dose of INTUNIV® rather than optimized by body weight. Therefore, it is likely that some adolescent patients were randomized to a dose that resulted in relatively low plasma guanfacine concentrations compared to the younger sub-group. Over half (55%) of the adolescent patients received doses of 0.01-0.04mg/kg. In studies in which systematic pharmacokinetic data were obtained, there was a strong inverse correlation between body weight and plasma guanfacine concentrations.

Study 3: Flexible-dose INTUNIV® as Adjunctive Therapy to Psychostimulants

Study 3 evaluated 1 mg, 2 mg, 3 mg and 4 mg of INTUNIV® dosed once daily in a 9-week, double-blind, placebo-controlled, dose optimization study. This study evaluated the safety and efficacy of INTUNIV®, dosed either in the morning or the evening, compared to placebo, when given in combination with a psychostimulant, in children and adolescents aged 6-17 years with a diagnosis of ADHD, with a sub-optimal response to stimulants (n=455). Subjects were started at the 1 mg INTUNIV® dose level and were titrated weekly over a 5-week dose-optimization period to an optimal INTUNIV® dose not to exceed 4 mg/day based on tolerability and clinical response. The dose was then maintained for a 3-week dose maintenance period before entry to 1 week of dose tapering. Subjects took INTUNIV® either in the morning or the evening while maintaining their current dose of psychostimulant treatment given each morning. Allowable psychostimulants in the study were ADDERALL XR®, VYVANSE®, CONCERTA®, FOCALIN XR®, RITALIN LA®, METADATE CD® or FDA-approved generic equivalents.

Symptoms of ADHD were evaluated on a weekly basis by clinicians using the ADHD Rating Scale (ADHD-RS-IV), which includes both hyperactive/impulsive and inattentive subscales. The primary efficacy outcome was the change from baseline to endpoint in

ADHD-RS-IV total scores. Endpoint was defined as the last post-randomization treatment week prior to dose tapering for which a valid score was obtained (up to Week 8).

Mean reductions in ADHD-RS-IV total scores at endpoint were significantly greater for INTUNIV® given in combination with a psychostimulant compared to placebo given with a psychostimulant for Study 3, for both morning and evening INTUNIV® dosing. Nearly two-thirds (64.2%) of subjects reached optimal doses in the 0.05-0.12 mg/kg/day range. Controlled adjunctive long-term efficacy studies (>9 weeks) have not been conducted.

16 HOW SUPPLIED/STORAGE AND HANDLING

INTUNIV® is supplied in 1 mg, 2 mg, 3 mg, and 4 mg strength extended-release tablets in 100 count bottles.

	1 mg	2 mg	3 mg	4 mg
Color	White/off-white	White/off-white	Green	Green
Shape	Round	Caplet	Round	Caplet
Debossment (top/bottom)	503 / 1mg	503 / 2mg	503 / 3mg	503 / 4mg
NDC number	54092-513-02	54092-515-02	54092-517-02	54092-519-02

Storage - Store at 25°C (77°F); excursions permitted to 15° to 30°C (59° to 86°F). See USP Controlled Room Temperature.

17 PATIENT COUNSELING INFORMATION

[See FDA-Approved Patient Labeling.]

17.1 Dosing and Administration

Instruct patients to swallow INTUNIV® whole with water, milk or other liquid. **Tablets should not be crushed, chewed or broken prior to administration because this may increase the rate of release of the active drug.** Patients should not take INTUNIV® together with a high-fat meal, since this can raise blood levels of INTUNIV®. Instruct the parent or caregiver to supervise the child or adolescent taking INTUNIV® and to keep the bottle of tablets out of reach of children.

Instruct patients on how to properly taper the medication, if the physician decides to discontinue treatment.

17.2 Adverse Reactions

Advise patients that sedation can occur, particularly early in treatment or with dose increases. Caution against operating heavy equipment or driving until they know how they respond to treatment with INTUNIV®. Headache and abdominal pain can also occur. If any of these symptoms persist, or other symptoms occur, the patient should be advised to discuss the symptoms with the physician.

Advise patients to avoid becoming dehydrated or overheated, and to avoid use with alcohol.

Patient Information
INTUNIV® (in-TOO-niv)
(guanfacine)
Extended-Release Tablets

Read the Patient Information that comes with INTUNIV® before you start taking it and each time you get a refill. There may be new information. **This leaflet does not take the place of talking with your doctor about your medical condition or your treatment.**

What is INTUNIV®?

INTUNIV® is a prescription medicine used to treat the symptoms of attention deficit/hyperactivity disorder (ADHD).

INTUNIV® is not a central nervous system (CNS) stimulant.

INTUNIV® should be used as a part of a total treatment program for ADHD that may include counselling or other therapies.

It is not known if INTUNIV® is effective:

- for use longer than 9 weeks

It is not known if INTUNIV® is safe or effective:

- in children younger than 6 years old
- in adults

What should I tell my doctor before taking INTUNIV®?**Before you take INTUNIV®, tell your doctor if you:**

- have heart problems or a low heart rate
- have fainted
- have low blood pressure
- have liver or kidney problems
- have any other medical conditions
- are pregnant or plan to become pregnant. It is not known if INTUNIV® will harm your unborn baby. Talk to your doctor if you are pregnant or plan to become pregnant.
- are breast-feeding or plan to breast-feed. It is not known if INTUNIV® passes into your breast milk. You and your doctor should decide if you will take INTUNIV® or breastfeed.

Tell your doctor about all of the medicines you take, including prescription and non-prescription medicines, vitamins, and herbal supplements.

INTUNIV® may affect the way other medicines work, and other medicines may affect how INTUNIV® works.

Especially tell your doctor if you take:

- ketoconazole
- medicines that can affect enzyme metabolism
- valproic acid
- high blood pressure medicine
- sedatives
- benzodiazepines
- barbiturates
- antipsychotics

Ask your doctor or pharmacist for a list of these medicines, if you are not sure.

Know the medicines you take. Keep a list of them and show it to your doctor and pharmacist when you get a new medicine.

How should I take INTUNIV®?

- Take INTUNIV® exactly as your doctor tells you.
- Your doctor may change your dose. Do not change your dose of INTUNIV® without talking to your doctor.
- Do not stop taking INTUNIV® without talking to your doctor.
- INTUNIV® should be taken 1 time a day, either alone or in combination with an ADHD stimulant medication that your doctor may prescribe. Your doctor will tell you when to take INTUNIV® and when to take your ADHD stimulant medication.
- INTUNIV® should be swallowed whole with a small amount of water, milk, or other liquid.
- Do not crush, chew, or break INTUNIV®. Tell your doctor if you can not swallow INTUNIV® whole.
- Do not take INTUNIV® with a high-fat meal.
- Your doctor will check your blood pressure and heart rate while you take INTUNIV®.
- If you take too much INTUNIV®, call your local Poison Control Center or go to the nearest emergency room right away.

What should I avoid while taking INTUNIV®?

- Do not drive, operate heavy machinery, or do other dangerous activities until you know how INTUNIV® affects you. INTUNIV® can slow your thinking and motor skills.
- Do not drink alcohol or take other medicines that make you sleepy or

dizzy while taking INTUNIV® until you talk with your doctor. INTUNIV® taken with alcohol or medicines that cause sleepiness or dizziness may make your sleepiness or dizziness worse.

What are the possible side effects of INTUNIV®?**INTUNIV® may cause serious side effects including:**

- low blood pressure
- low heart rate
- fainting
- sleepiness

Get medical help right away, if you have any of the symptoms listed above.

The most common side effects of INTUNIV® include:

- sleepiness
- tiredness
- trouble sleeping
- low blood pressure
- nausea
- stomach pain
- dizziness

Tell the doctor if you have any side effect that bothers you or that does not go away.

These are not all the possible side effects of INTUNIV®. For more information, ask your doctor or pharmacist.

Call your doctor for medical advice about side effects. You may report side effects to FDA at 1-800-FDA-1088.

How should I store INTUNIV®?

- Store INTUNIV® between 59°F to 86°F (15°C to 30°C)

Keep INTUNIV® and all medicines out of the reach of children.**General Information about INTUNIV®**

Medicines are sometimes prescribed for purposes other than those listed in a Patient Information Leaflet. Do not use INTUNIV® for a condition for which it was not prescribed. Do not give INTUNIV® to other people, even if they have the same symptoms that you have. It may harm them.

This leaflet summarizes the most important information about INTUNIV®. If you would like more information, talk with your doctor. You can ask your pharmacist or doctor for information about INTUNIV® that is written for health professionals.

For more information, go to www.INTUNIV.com or call 1-800-828-2088.

What are the ingredients in INTUNIV®?

Active ingredient: guanfacine hydrochloride

Inactive ingredients: hypromellose, methacrylic acid copolymer, lactose, povidone, crospovidone, microcrystalline cellulose, fumaric acid, and glycerol behenate. In addition, the 3mg and 4mg tablets also contain green pigment blend PB-1763.

Manufactured for Shire US Inc., Wayne, PA 19087.

INTUNIV® is a registered trademark of Shire LLC.

©2011 Shire Pharmaceuticals Inc.

This product is covered by US patents including 5,854,290; 6,287,599; 6,811,794.

Version: 06/2011 INT-01937

